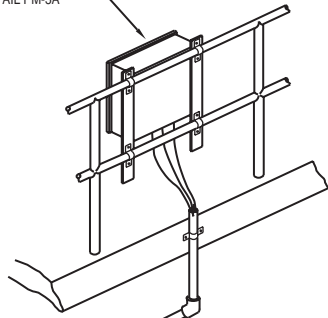


FINE BUBBLE DISC AERATION SYSTEM  
 PRESSURE MONITORING  
 ISOMETRIC



DWG. 99-171

CONNECTING BOX PART NO.  
FOR ASSEMBLY OF MOUNTING BRACKET  
SEE DETAIL PM-3A



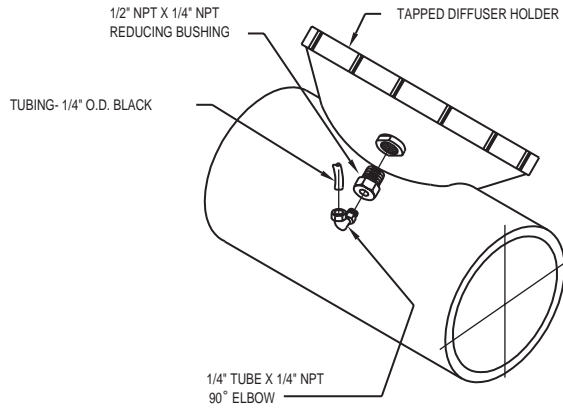
ANCHOR BOLT  
SUPPORT CLIP

TUBING- 1/2" O.D. BLACK  
FOR ASSEMBLY OF BUBBLE LINE  
SEE DETAIL PM-4A

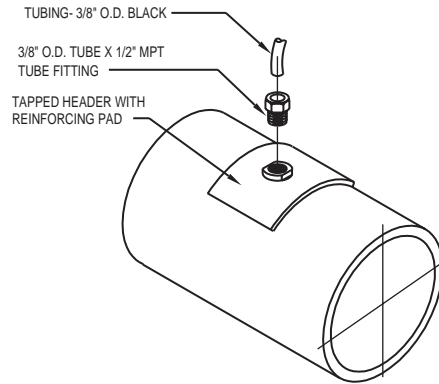
TUBING- 1/4" O.D. BLACK  
FOR ASSEMBLY OF HOLDER TAP  
SEE DETAIL PM-6

GUIDE SUPPORT

**PRESSURE MONITORING ASSEMBLY**  
**DETAIL PM-1H**

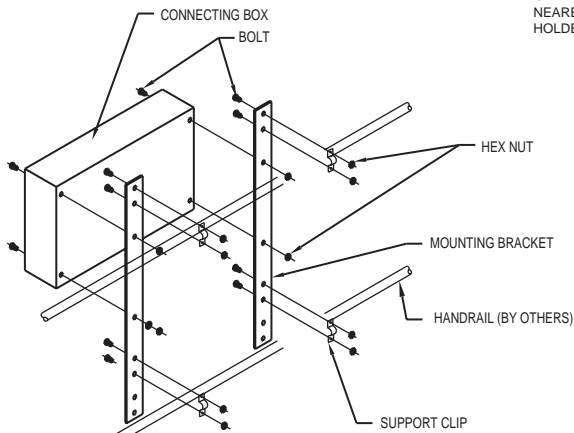


**HOLDER TAP ASSEMBLY**  
**DETAIL PM-6**

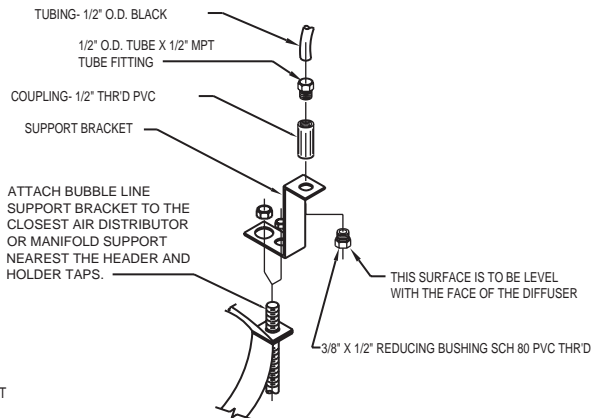


**HEADER TAP ASSEMBLY**  
**DETAIL PM-5**

ORIENTATION SHOWN IS A GENERAL  
REPRESENTATION OF EQUIPMENT  
SUPPLIED BY SANITAIRE.  
ACTUAL ORIENTATION OF AIR  
DISTRIBUTORS AND MANIFOLDS  
MAY VARY.



**CONNECTING BOX ASSEMBLY**  
**DETAIL PM-3A**



**BUBBLE LINE ASSEMBLY**  
**DETAIL PM-4A**

FINE BUBBLE DISC AERATION SYSTEM  
PRESSURE MONITORING DETAILS

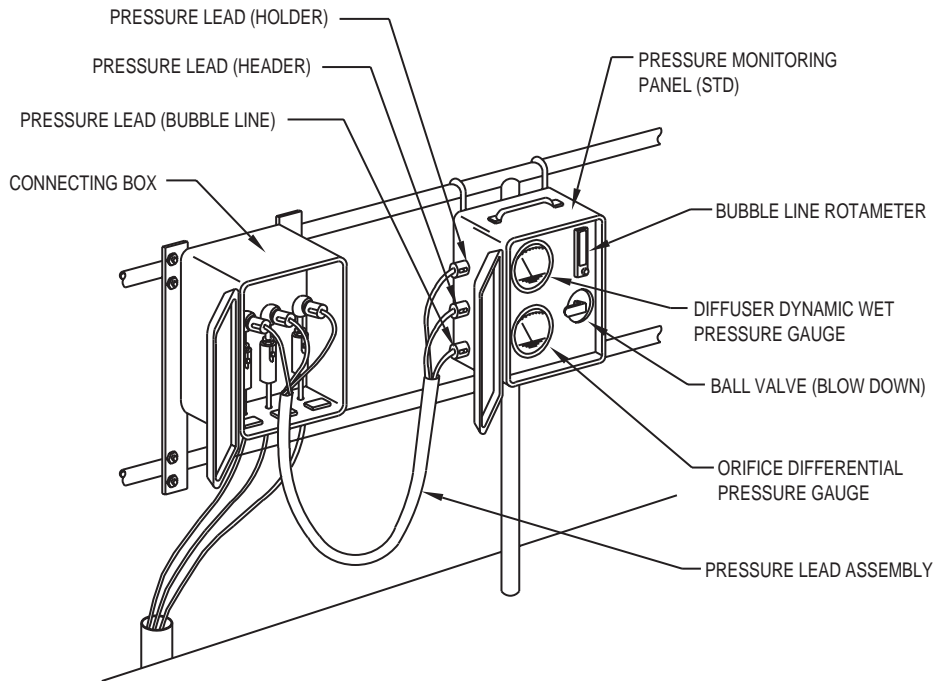


Sanitaire

ITT Industries

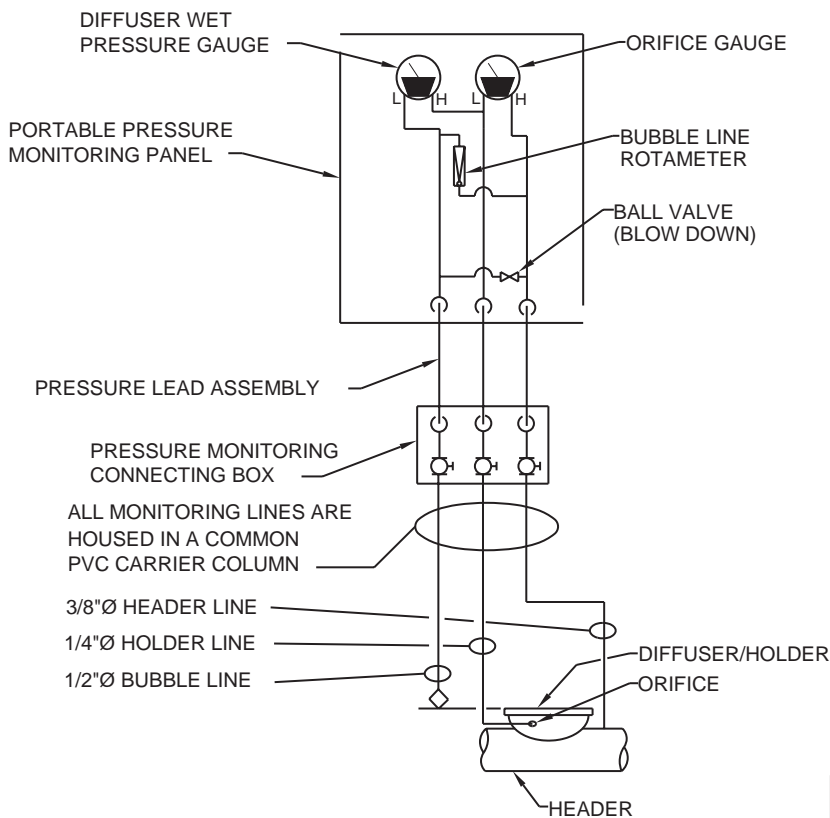
BROWN DEER, WISCONSIN 53223

DWG. 99-172



**PRESSURE MONITORING PANEL(STD) CONNECTION**

**DETAIL PM-2C**



**PRESSURE MONITORING SYSTEM**

**PROCESS SCHEMATIC**

FINE BUBBLE DISC AERATION SYSTEM  
MONITORING CONNECTION  
AND SCHEMATIC DETAILS



Sanitaire

ITT Industries

BROWN DEER, WISCONSIN 53223

DWG. 99-173